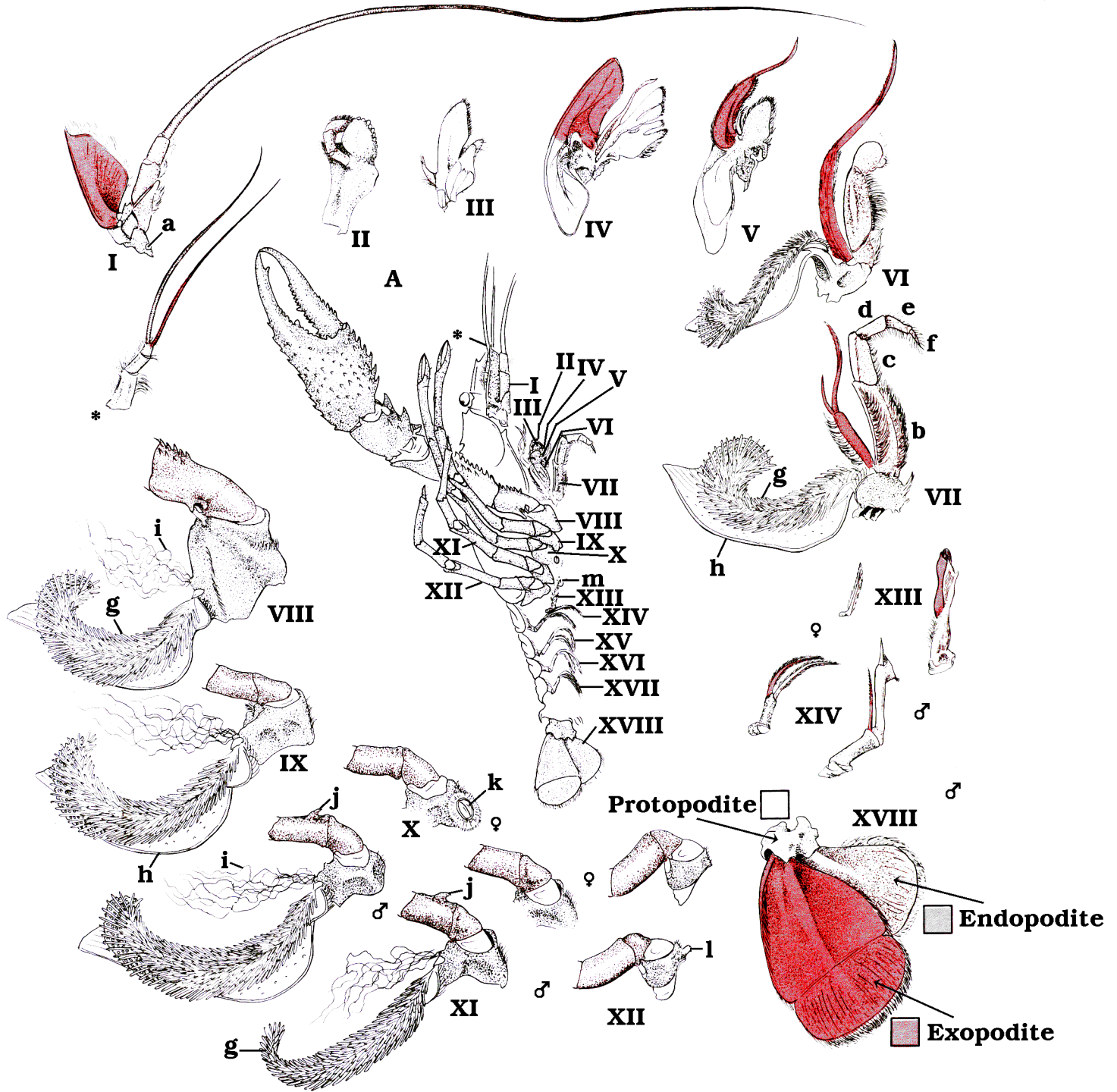


CRAYFISH ANATOMY

Appendages



A. Female, right side

- *Antennule
- I. Antenna
- II. Mandible
- III. 1st Maxilla
- IV. 2nd Maxilla
- V. 1st Maxilliped
- VI. 2nd Maxilliped

VII. 3rd Maxilliped

- VIII. Chela
- IX. 2nd Walking leg
- X. 3rd Walking leg
- XI. 4th Walking leg
- XII. 5th Walking leg
- XIII. 1st Pleopod
- XIV. 2nd Pleopod

XV, XVI, XVII. Pleopods

- XVIII. Uropod
- a. Nephridiopore
- b. Ischium
- c. Merus
- d. Carpus
- e. Propus
- f. Dactylus

- g. Podobranch
- h. Epipodite
- i. Coxal setae
- j. Copulatory spine
- k. Female genital pore
- l. Male genital pore
- m. Seminal receptacle