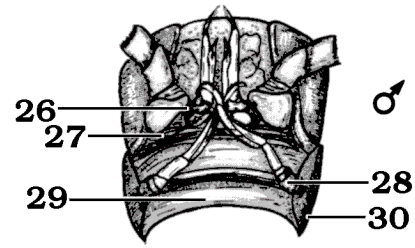
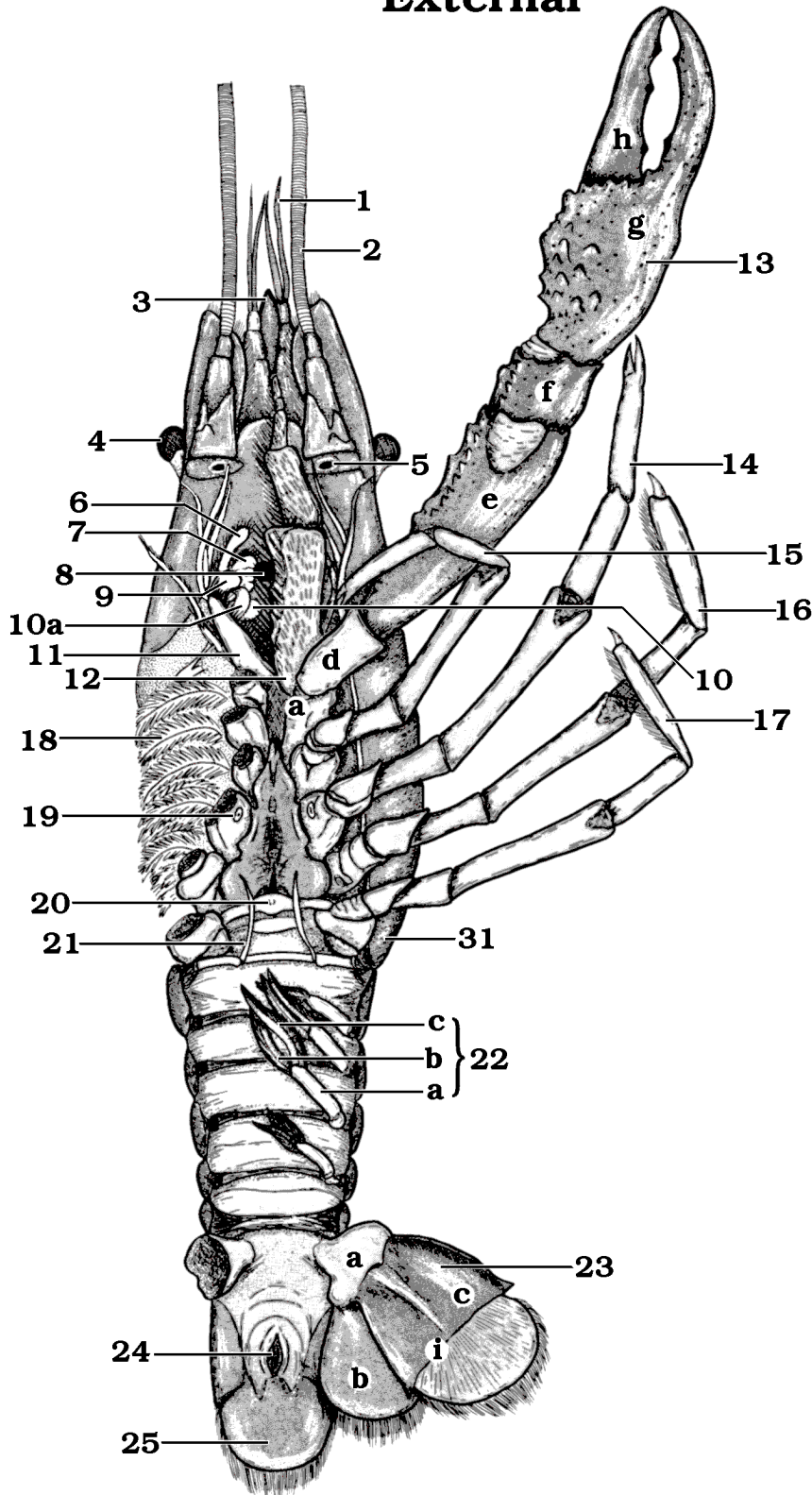


CRAYFISH ANATOMY

External



1. Antennule
2. Antenna
3. Rostrum
4. Eye
5. Nephridiopore
6. Mandibular palp
7. Mandible
8. Mouth
9. 1st maxilliped
10. 1st maxilla
- a. 2nd maxilla
11. 2nd maxilliped
12. 3rd maxilliped
13. Cheliped
14. 3rd walking leg
15. 2nd walking leg
16. 4th walking leg
17. 5th walking leg
18. Gills
19. Oviduct opening
20. Seminal receptacle
21. 1st pleopod
22. 4th pleopod
23. Uropod
24. Anus
25. Telson
26. Genital opening (male)
27. 1st pleopod
28. 2nd pleopod
29. Sternum
30. Pleuron
31. Tergum
- a. Protopodite
- b. Endopodite
- c. Exopodite
- d. Ischium
- e. Merus
- f. Carpus
- g. Propus
- h. Dactylus
- i. Transverse hinge