

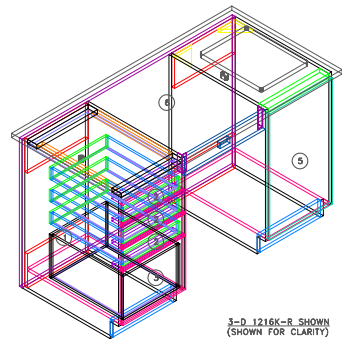
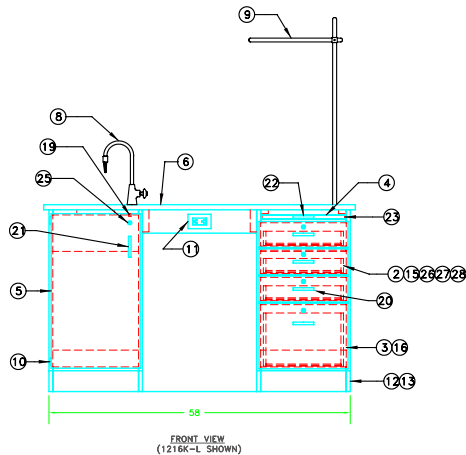
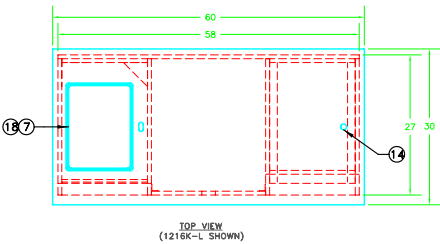
PART NUMBER	DESCRIPTION	"A"
1216K-L	DOOR,MJ,EB4,KRC,16.50X29.25,LH	202615DW1-LH
1216K-R	DOOR,MJ,EB4,KRC,16.50X29.25,RH	202615DW1-RH

NOTE:
 ITEM 11: ELEC ASSY, GFI, 15A 125V, BLACK (#206100) INCLUDES:
 (1) ELECTRICAL BOX 3X2X2.5 DEEP (#100033)
 (1) ELEC, OUTLET, GFI, 15A 125V, BLACK (#100034)
 (4) SCREW,#8 X 1/2 PPH SMS T-A ZINC (#100475)
 ITEM 18: DRAIN KIT, EPOXY SINKS W/TRAP (#205561) INCLUDES:
 (1) SINK TRAP, PLASTIC ADJUSTABLE (#100056)
 (1) SINK, OUTLET/STRAINER EPOXY, BLACK (#100055)
 (1) SINK STOPPER, 1/2 BLACK (#100112)
 (1) BASE, SILICONE SEAL (#100711)
 ITEM 9: 36"/18" ROD & CROSSBAR ASSEMBLY (#206525) INCLUDES:
 (1) ROD CLAMP 3/4 X 3/4 (#100002)
 (1) ROD, UPRIGHT 3/4 DIA X 36L (#100004)
 (1) ROD, CROSSBAR 3/4 DIA X 18L (#100005)
 (2) SCREW, THUMB 1/4-20 X 1/2 PRESSED ZI (#100490)

NOTE:
 THE FOLLOWING ITEMS ARE TO BE PLACED IN ITEM 24 (HARDWARE BOX):
 ITEM 12 (1) 18" FT BASE, RUBBER 4" WIDE (#100283)
 ITEM 17 (1) FILE HANGER, METAL DROP IN (#100178)
 (1) ROD SOCKET ASSEMBLY (#100001)
 (1) ROD CLAMP 3/4 X 3/4 (#100002)
 (1) ELECTRICAL BOX 3 X 2 X 2.5 DEEP (#100033)
 (1) ELEC, OUTLET, GFI, 15A 125V, BLACK (#100034)
 (5) CORNERS-STAINLESS STEEL, BASE (#100007)
 (24) SCREW,#8 X 1/2 PPH SMS SS SCREW (#100084)
 (1) DRAIN KIT, EPOXY SINKS W/TRAP (#205561)

ITEMS NOT VISIBLE: (24)

BAL	QTY	UM	P/N	DESCRIPTION
1	1	EA	206501	CABINET,1216K,1216KF
2	3	EA	201024DW1-1RC	DRW,MAJ,KRC,16.50X4.50X19.75
3	1	EA	201032DW1-1RC	DRW,FILE,MAJ,KRC,16.50X12.00X19.75
4	1	EA	201287	PULLBOARD,KD3,EB1,75X16.25X25.25
5	1	EA	202615DW1-LH	DOOR,MAJ,KRC,EB4,16.50X29.25,LH
6	1	EA	100499	TOP,EPOXY,1.00X30X60,BLK,FIXT
7	1	EA	100692	SINK,EPOXY LSC,BLK
8	1	EA	100074	FIXTURE,L65-W5A-DIV(MULTI-SERVICE)
9	1	EA	206525	ROD,ASSY,1-18,1-36,3/4X3/4DIAM.
10	2	EA	206512	HINGE,ASSY,FULLOVERLAY,STL
11	1	EA	206100	ELEC,ASSY,GFI,15A 125V,BLK
12	18	FT	100283	RUBBER BASE MOLDING (SOLD BY FOOT)
13	3	EA	206513	CORNER,BASE,ASSY,SS1,2CORNERSW/SCRW
14	1	SET	206505	ROD, SOCKET,ASSY, SOCKET, WASHER, NUT
15	24	EA	100177	SCREW,EURO,PHILLIPS FLAT
16	1	PR	100777	DRAWER SLIDE,20 FULL EXT, 100#, ZN
18	1	EA	206561	SINK,ASSY,EPOXY,STRNR,STPPR,TRAP
19	1	EA	206507	CATCH,ROLLER,ASSY
20	4	EA	206523	PULL,ASSY,DRAWER,96MM WIRE,CHROME
21	1	EA	206522	PULL,ASSY,DOOR,96MM WIRE,CHROME
22	1	EA	206524	PULL,ASSY,PULLBOARD,96MM WIRE,CHROME
23	2	EA	100498	SLIDE,PULL BOARD
24	1	EA	100609	BOX,MOBILE LAB HARDWARE
25	5	EA	211197	LOCK,ASSY,DISC,MAJ
26	3	PR	100132	DRAWER SLIDE,20 3/4 EXT, 100# WH
27	12	EA	100479	SCREW,#6X5/8 PPH SMS T-A ZINC
28	12	EA	100570	SCREW,#6X5/8 PPH T/S T-A ZINC



NOTE:
 ITEMS 27 & 28 ARE USED TO ATTACH DRAWER SLIDES TO DRAWER
 ITEM 15 IS USED TO ATTACH DRAWER SLIDES TO CABINET

REV	DESCRIPTION	DATE	APPROVED	BY
1	ROD CLAMP IN KIT ITEM 17 WAS 100003 - ITEM 18 WAS 206101	11/15/04	METROCDR	ADRYJA
2	ITEM 25 WAS CHANGED FROM 100021 TO 207012	1/27/05	JCROSS	4/6/2004
3	ITEM 17 (100178) WAS ELIMINATED	3/2/05	JCROSS	JD
4	ITEM 25 WAS 207012.	5/02/05	JCROSS	5/02/05

DIVERSIFIED WOODCRAFTS, INC	
TITLE DESK,INSTR,60X30X36 W/FIX	
DRAWING NUMBER	REVISION
1216K	REV 4
SCALE 1 = 12	SHEET 1 OF 1