

Assembly Instructions for 1516K Pedestal Octagon Workstations

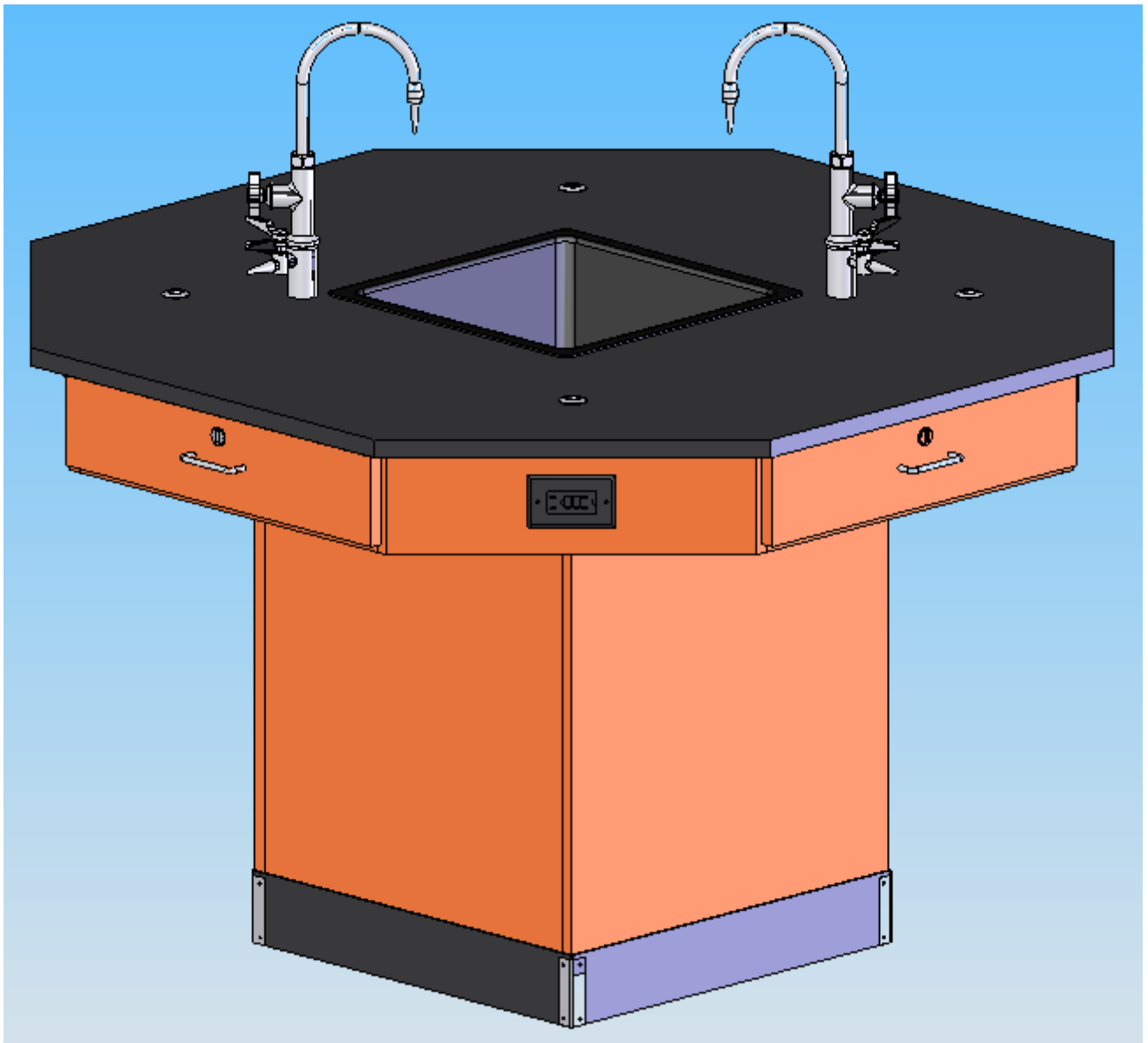


TABLE OF CONTENTS

	PAGE
REVISIONS TABLE.....	3
ASSEMBLY COMPONENTS.....	4
BASE ASSEMBLY.....	6
APRON ASSEMBLY.....	7
ROD SOCKET ASSEMBLY.....	7
TOP ASSEMBLY.....	8
SINK ASSEMBLY.....	9
FIXTURE ASSEMBLY.....	9
PULL ASSEMBLY.....	10
BASE MOULDING ASSEMBLY.....	10

ASSEMBLY COMPONENTS

Items Included In Hardware Box	Part #		Part #
ASSEMBLY INSTRUCTIONS		1-HARDWARE BOX	
4-ELECTRICAL BOX, 3X2X2.5	100033	1-TOP, EPOXY 56X56 BLK, FIXT, OCT	100590
4-GFI ELECTRICAL OUTLET	100034	2-FIXTURE, L65-WSA-DIV	100074
16-SCREW, 6X1/2 PPH	100475	1-SINK, EPOXY L20 BLK	100697
4-STAINLESS STEEL CORNERS	100057	1-APRON ASSY 52 X 52	207507
16-SS SCREWS, 6X1/2 PTH	100064	1-SILICONE SEALANT	100711
8FT RUBBER BASE	100283	6-#8 X 1 1/4 PPH SCREWS	100378
1-SINK OUTLET/STRAINER	100055	4-ROD SOCKET ASSY	206505
1-SINK TRAP, PLASTIC ADJ	100056	1-SINK STOPPER 1 1/2 BLK	100112

REV	DESCRIPTION	DATE	INITIAL
---	Original Created	2-28-07	JWD

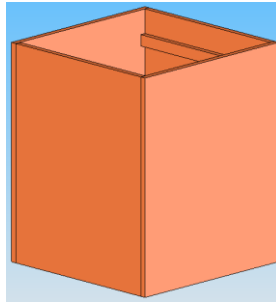
Items not included but needed for assembly:

- | | |
|---|-------------------|
| 1. Phillips head screwdriver | 4. Tape measure |
| 2. ½" Wrench | 5. Utility knife |
| 3. Adjustable pliers | 6. Contact cement |
| 7. Liquid Nail or silicone adhesive (can be found in hardware stores) | |

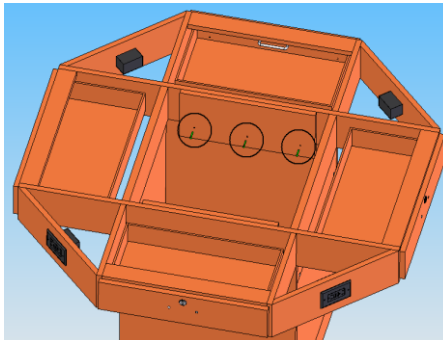
Inspect all components for shipping damage.

Instructions:

1. Place the base unit over the plumbing, electrical and gas hook-ups. There is a removable panel on one side of the base unit to access the utilities in the future. Level the pedestal base and anchor to the floor.



2. Set the apron on the base unit with the extensions slid inside the base. Screw the apron to the base unit through the extensions using six each #8 x 1-1/4" (100378) flat Phillips screws.



3. Assemble the Rod Socket Assembly as shown in Figure 9A. Attach Rod Sockets to Top as shown in Figure 9B.

Figure 9A

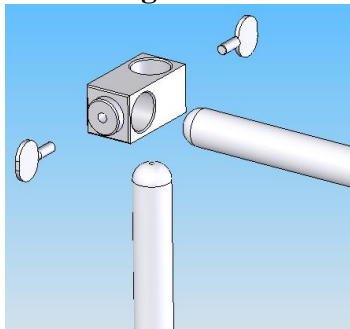
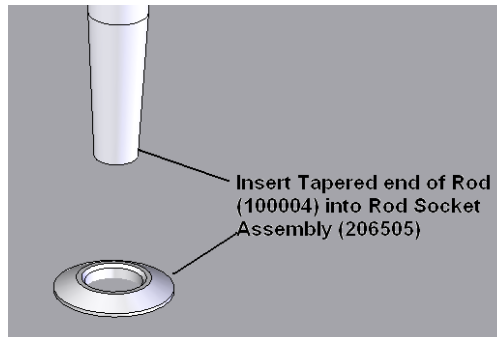
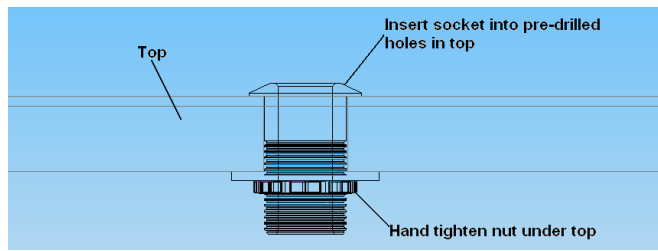
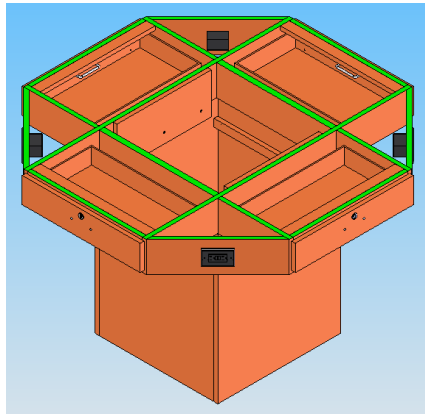


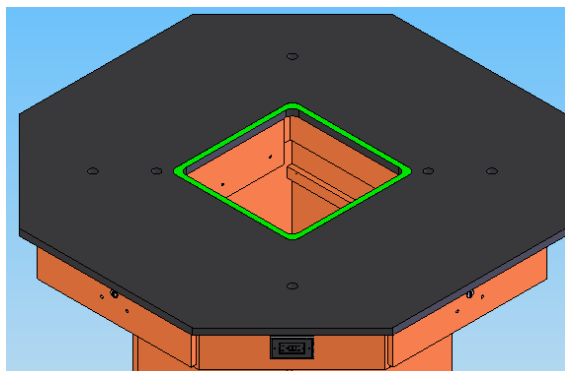
Figure 9B



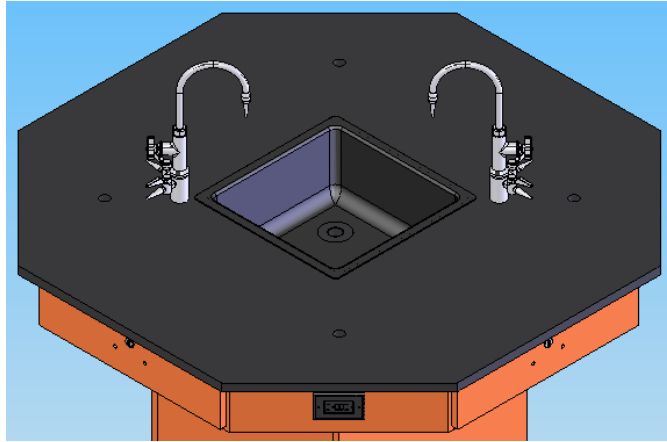
- Outline all of the top edges of the base unit and wings with the silicone adhesive caulk and place top bottom side down on the unit. Be sure to center the top on all sides before the silicone dries. Let cure for 24 hours. Clean the top with water only. Be sure the area that the sink is dropped into is clean and dry.



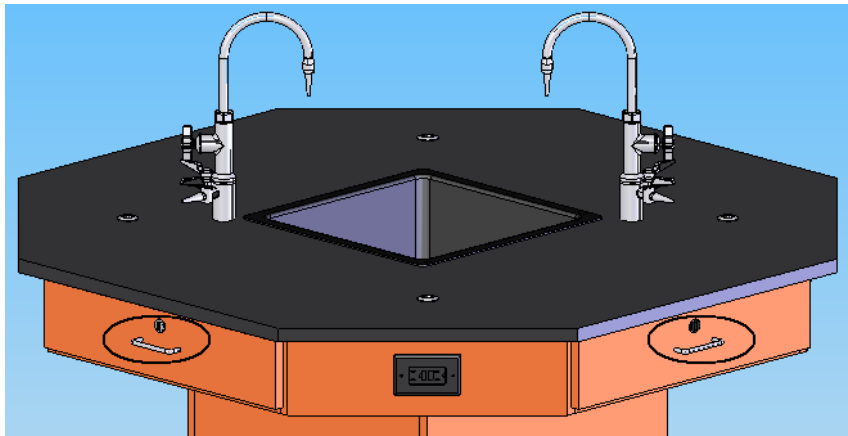
- Put a bead of silicone seal along the sink cutout on the top. Lower sink in place. Remove any excess caulk that is displaced around the sink.



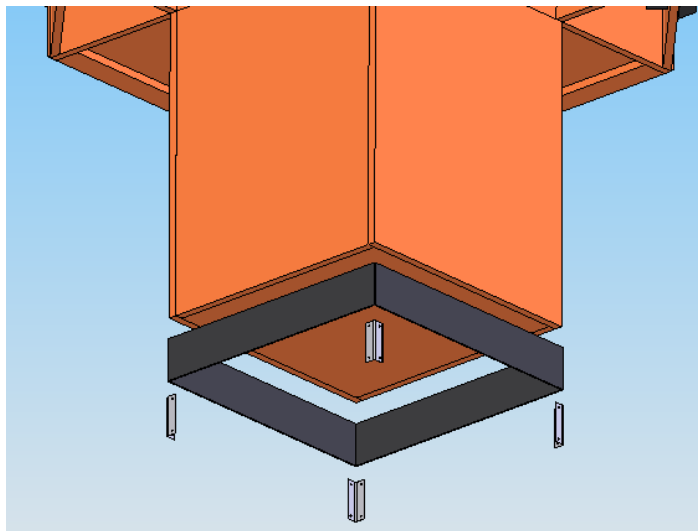
- Mount fixtures into place.



7. Reverse pulls to the exterior of unit as shown.



8. Cut the rubber base molding and attach using contact cement. After molding is in place, use the #6 x 1/2" SS screws to attach the stainless steel corner brackets on each corner over the base molding.



9. All water, electrical and gas connections should be performed by a trained professional.