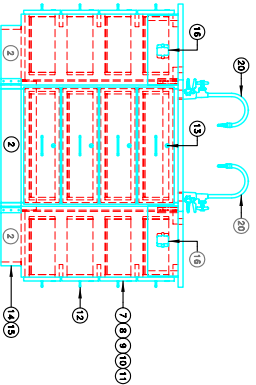
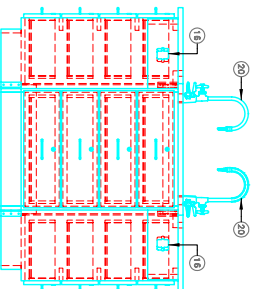


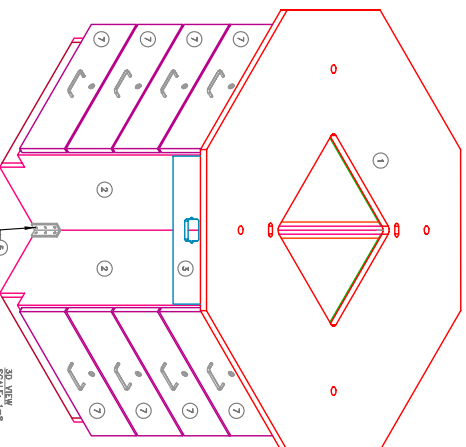
TOP VIEW
SCALE: 1=12



FRONT VIEW
SCALE: 1=12



SIDE VIEW
SCALE: 1=12



3D VIEW
SCALE: 1=8
(SHOWN FOR CLARITY)

NOTE:
ITEM 19: DRAIN KIT, EPOXY SINKS W/RAIP (2028101) INCLUDES:
- SINK: 1006980
- SINK: 1006985
- SINK: 1006995
- SINK: 1006997
- SINK: 1006998
- SINK: 1006999
- SINK: 1007000
- SINK: 1007001
- SINK: 1007002
- SINK: 1007003
- SINK: 1007004
- SINK: 1007005
- SINK: 1007006
- SINK: 1007007
- SINK: 1007008
- SINK: 1007009
- SINK: 1007010
- SINK: 1007011
- SINK: 1007012

BAL	QTY	UM	P/N	DESCRIPTION
1	1	EA	1006980	
2	4	EA	2025112	
3	16	EA	2025111	
4	4	EA	2025110	
5	8	EA	1006985	
6	4	EA	1006995	
7	16	EA	2025109M1-IRC	
8	16	EA	1007007	
9	96	EA	1006979	
10	64	EA	1006978	
11	32	EA	1006976	
12	16	EA	2111897	
13	16	EA	2065113	
14	4	EA	2065113	
15	17.5	FT	1002883	
16	4	EA	2065105	
17	4	EA	2065105	
18	1	EA	1006997	
19	1	EA	2095101	
20	2	EA	1000714	

NOTE:
- ITEM 4 IS USED TO ATTACH BRACKETS (ITEM 8) TO CABINET
- ITEM 8 IS USED TO ATTACH BRACKETS TO CABINET
- ITEM 9 IS USED TO ATTACH BRACKETS TO CABINET
- ITEM 10 IS USED TO ATTACH BRACKETS TO CABINET
- ITEM 11 IS USED TO ATTACH BRACKETS TO CABINET
- ITEM 12 IS USED TO ATTACH BRACKETS TO CABINET
- ITEM 13 IS USED TO ATTACH BRACKETS TO CABINET
- ITEM 14 IS USED TO ATTACH BRACKETS TO CABINET
- ITEM 15 IS USED TO ATTACH BRACKETS TO CABINET
- ITEM 16 IS USED TO ATTACH BRACKETS TO CABINET
- ITEM 17 IS USED TO ATTACH BRACKETS TO CABINET
- ITEM 18 IS USED TO ATTACH BRACKETS TO CABINET
- ITEM 19 IS USED TO ATTACH BRACKETS TO CABINET
- ITEM 20 IS USED TO ATTACH BRACKETS TO CABINET

REV	DESCRIPTION	DATE	BY	CHKD	APP'D	DATE	BY	CHKD	APP'D
1	ITEM 13 WAS 2025112	5/20/23				7/20/2024			

JABR/KA
 DIVERSIFIED WOODCRAFTS, INC
 THE OCTAGON WORKSTATION W/DRW BASE
 DRAWING NUMBER: 1546K
 SHEET 1 OF 1
 REV 1