

C2616 FOUR-STUDENT WORKSTATION ASSEMBLY INSTRUCTIONS

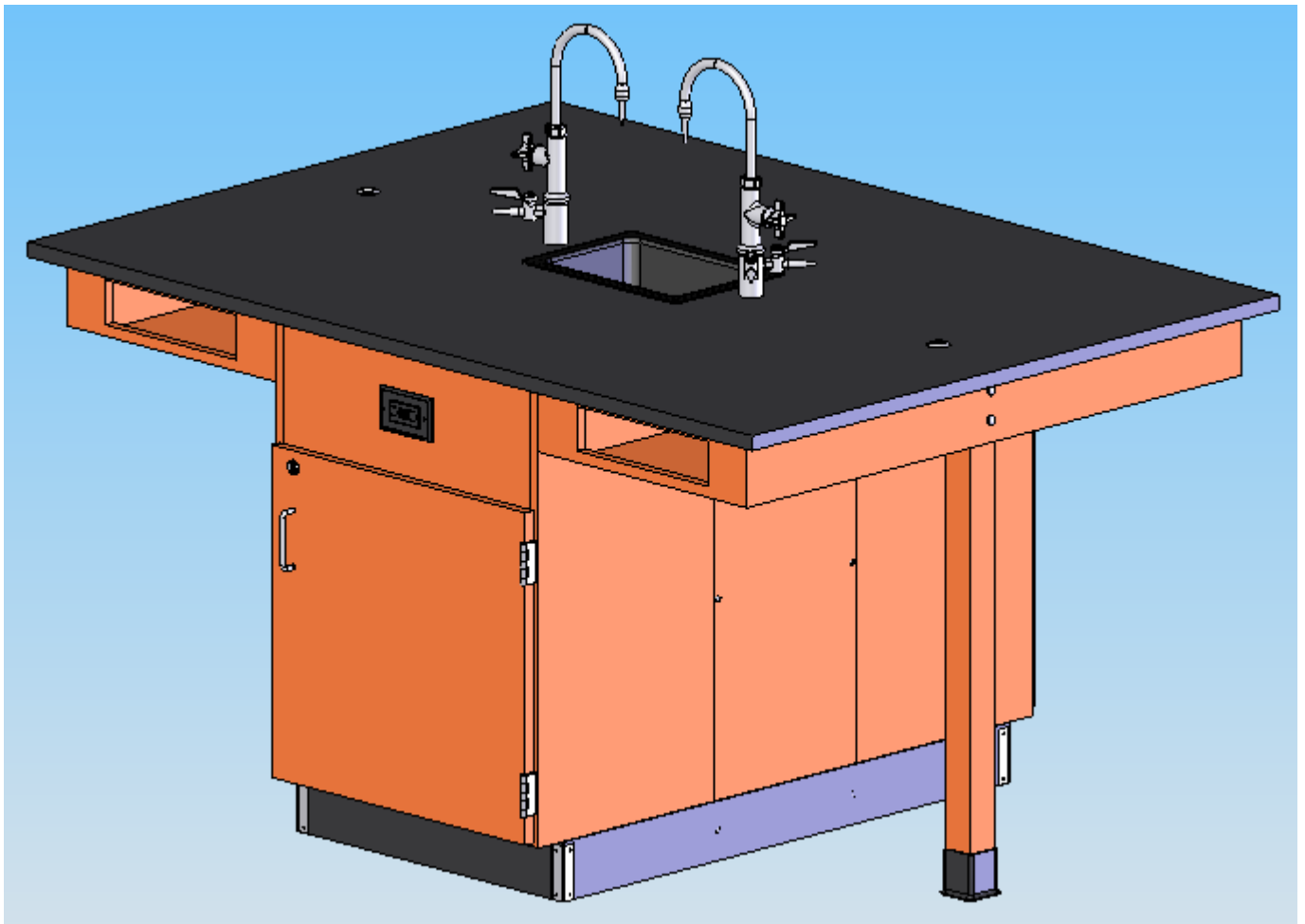


TABLE OF CONTENTS

	PAGE
REVISIONS TABLE.....	3
ASSEMBLY COMPONENTS.....	4
ASSEMBLY.....	5
APRON ASSEMBLY.....	6
LEG ASSEMBLY.....	8
ROD SOCKET ASSEMBLY.....	9
TOP ASSEMBLY.....	10
FIXTURE ASSEMBLY.....	11
SINK ASSEMBLY.....	11
BASE MOULDING ASSEMBLY.....	12
PULL ASSEMBLY.....	12

ASSEMBLY COMPONENTS

Items Included In Hardware Box	Part #		Part #
ASSEMBLY INSTRUCTIONS		1-HARDWARE BOX	
11FT-RUBBER BASE	100283	16-SCREWS, 6X1/2" PTH SS	100064
4-NUT, HEX 5/16-18 STEEL	100044	1-SINK OUTLET/STAINER	100055
4-CARRIAGE BOLT 5/16X4-1/2	100447	1-SINK TRAP, PLASTIC ADJ	100056
4-WASHER, 5/16 FLAT	100451	1-SINK STOPPER 1 1/2 BLK	100112
12-SCREW, #10X1-1/2 PHIL TR.	100495	4-CLEAT, RAIL	100355
2-ELECTRICAL BOX, 3X2X2.5	100033	16-SCREWS, 8 X 3/4" PHIL	100649
2-GFI ELECTRICAL OUTLET	100034	8 - SHELF CLIPS	100027
8-SCREW, 6X1/2	100475	1-SILICONE SEALANT	100711
2-ROD SOCKET ASSEMBLIES	206505	2-APRON, W/COMP	206802
4-STAINLESS STEEL CORNERS	100057	2-FILLER,BASE 35X13	BF3513KRC
2-FIXTURE, L65-WSA-DIV	100074	2-LEGS FOR WINGS	L36
1-EPOXY SINK, L3 BLK	100691	1- EPOXY TOP, 48X66	100500-F2
2 - SHELVES, 22.188 X 14	200397-2218	2-LEG HARDWARE ASSY	206618
		BOOT, LEVL, T-NUT	

REV	DESCRIPTION	DATE	INITIAL
---	Original Created	2-14-07	JWD

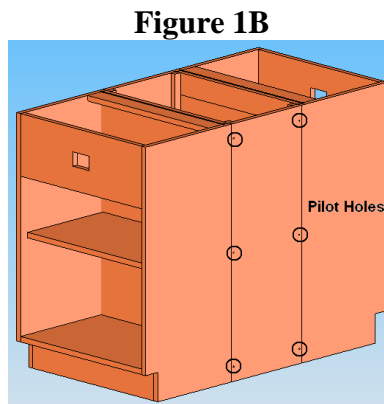
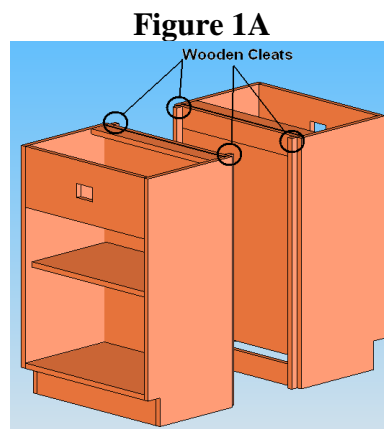
Assembly Instructions for C2616 4-Student Workstation

Items not included but needed for assembly:

1. Phillips head screwdriver
2. ½" Wrench
3. Adjustable pliers
4. Tape measure
5. Utility knife
6. Contact cement
7. Liquid Nail or silicone adhesive (can be found in hardware stores)

Instructions:

1. Place the two base cabinets back to back in the desired location (See Figure 1A). Attach the 13" x 35" filler panels to the cabinets by drilling pilot holes through the wooden cleats on the back of the cabinets and attach with #10 x 1 ½ truss head screws (See Figure 1B)



2. Level the base cabinets and attach to the floor.
3. Apply the steel rail cleat to the wing assembly with the #8 x ¾" truss head screws.

Figure 3A

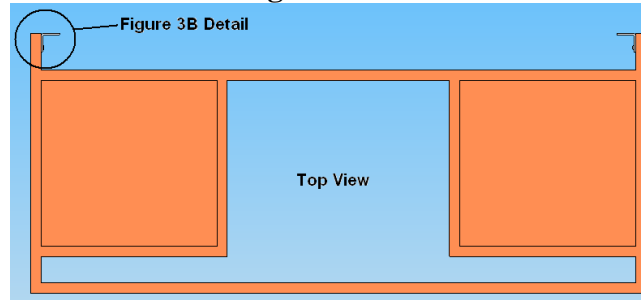
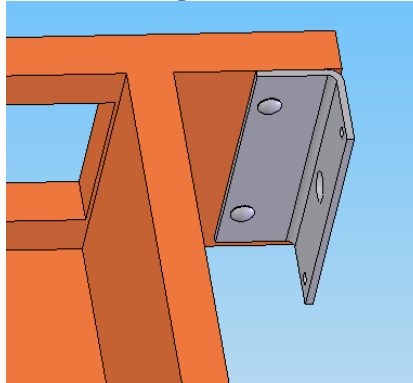


Figure 3B



4. While one person is holding the wing in place, another person should be attaching the wing to the side of the cabinet. **It is important that the wing is supported until the table leg is in place.** Make sure the wing is flush with the top of the base cabinet.

Figure 4A

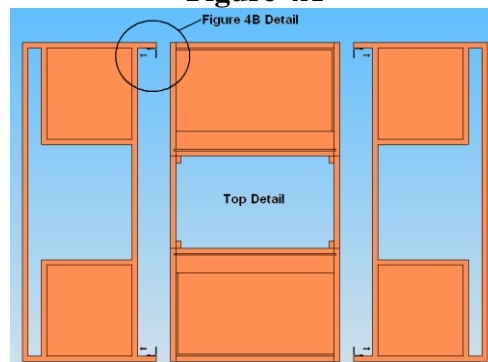
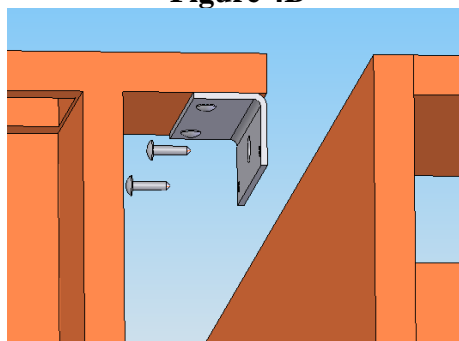
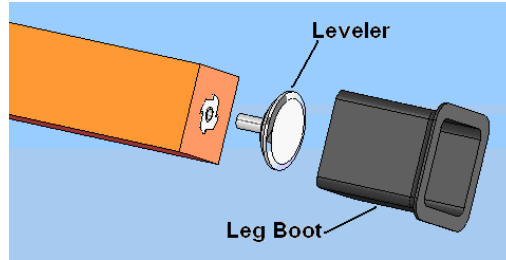


Figure 4B



5. Screw the leveler to the leg and attach leg boot.



6. Line up the holes in the wing and the leg and insert 4-1/2" x 5/16" carriage bolt and tighten washer and nut. Leg should be perpendicular to the wing. Use leveler on leg to level the wing with the cabinet.

Figure 6A

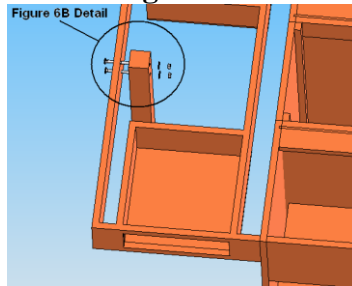
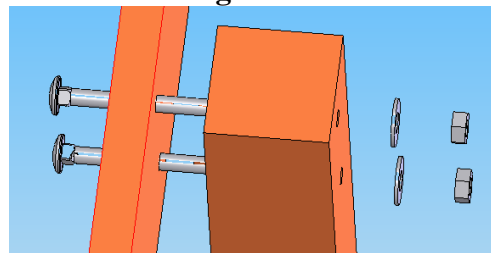


Figure 6B



7. Repeat wing and leg instructions on the other side of the cabinet.
8. Do not apply pressure to the wings at this time. **They are not strong enough to withstand weight until the top is attached.**
9. **(If Applicable)** Assemble the Rod Socket Assembly as shown in Figure 9A.
(If Applicable) Attach Rod Sockets to Top as shown in Figure 9B.

Figure 9A

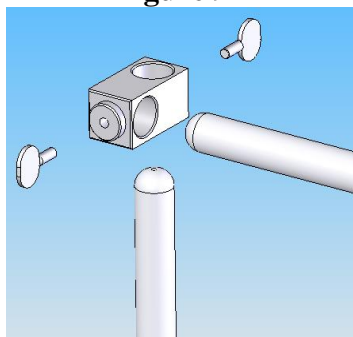
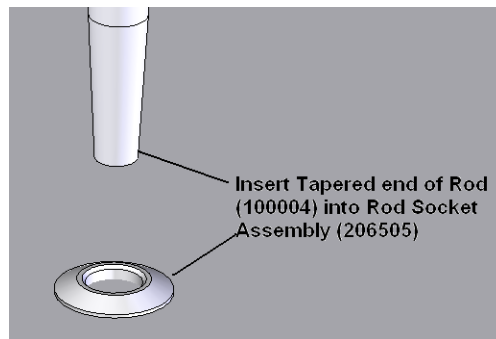
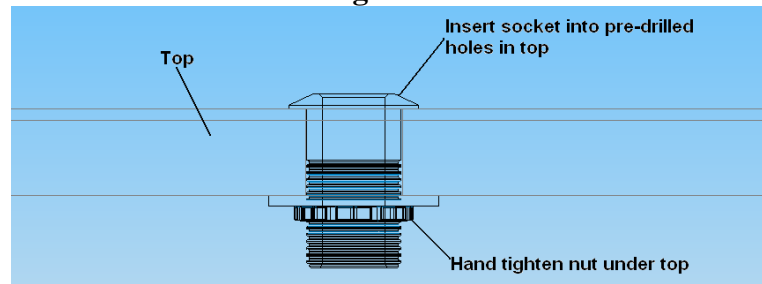
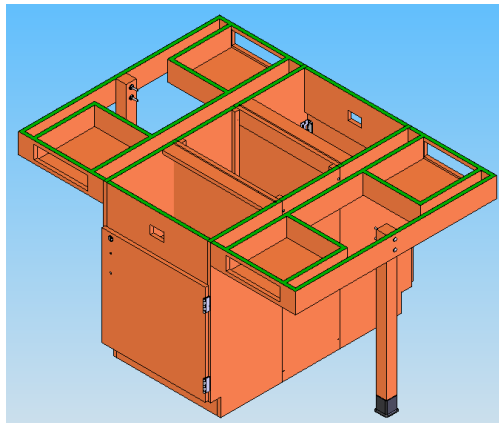


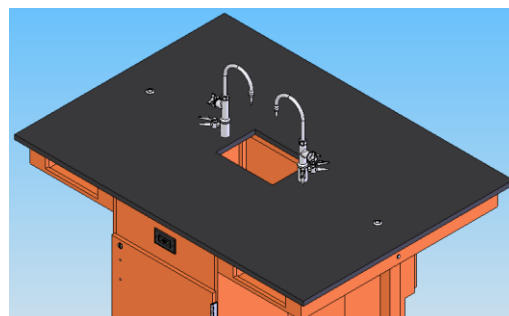
Figure 9B



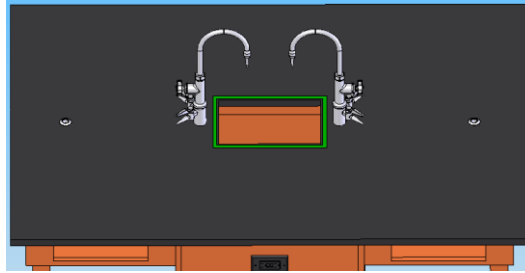
10. Outline all of the top edges of the base unit and wings with the silicone adhesive caulk and place top bottom side down on the unit. Be sure to center the top on all sides before the silicone dries. Let cure for 24 hours.



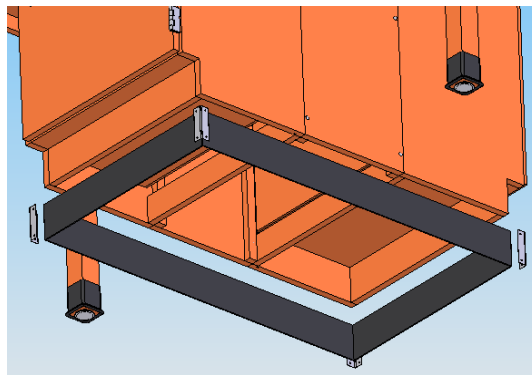
11. Clean the top with water only. Be sure the area that the sink is dropped into is clean and dry.
12. Mount fixtures into place.



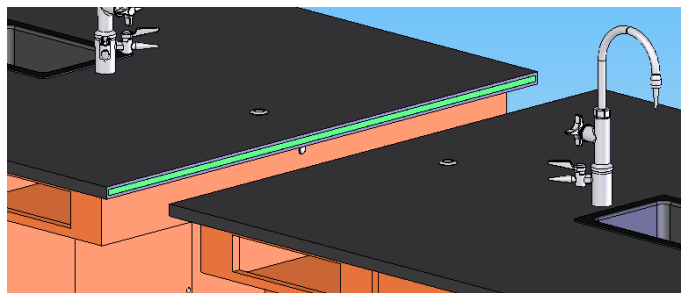
13. Put a bead of silicone seal along the sink cutout on the top. Lower sink in place. Remove any excess caulk that is displaced around the sink.



14. Cut the rubber base molding and attach using contact cement. After molding is in place, use the #6 x ½” SS screws to attach the stainless steel corner brackets on each corner over the base molding.



15. All water, electrical and gas connections should be performed by a trained professional.
- (Note: When multiple units are assembled together apply silicone to the edge of the tops that are being joined against each other. Remove any excess silicone. Allow 6-12 hours to cure.)



16. Reverse pulls to the exterior of unit as shown.

