

2946K – 2956K Forward Vision 4 Student Workstation

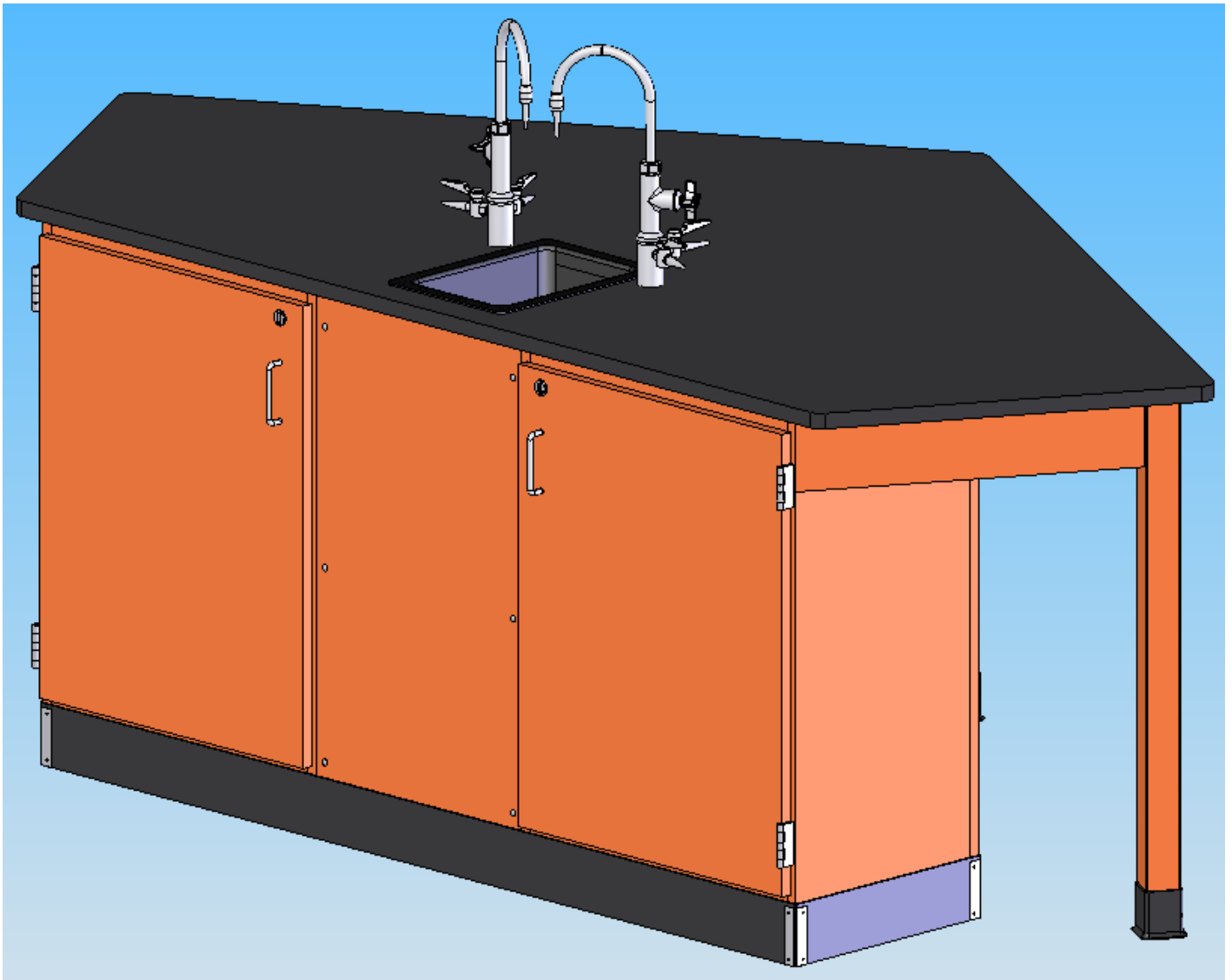


TABLE OF CONTENTS

	PAGE
REVISIONS TABLE.....	3
ASSEMBLY COMPONENTS.....	3
BASE.....	4
BACK PANEL ASSEMBLY.....	4
APRON ASSEMBLY.....	5
LEG ASSEMBLY.....	6
TOP ASSEMBLY.....	7
SINK ASSEMBLY.....	7
FIXTURE ASSEMBLY.....	7
BASE MOULDING ASSEMBLY.....	8
PULL ASSEMBLY.....	8

ASSEMBLY COMPONENTS

Items Included In Hardware Box	Part #		Part #
1-INSTRUCTION SHEET		1-HARDWARE BOX	
12.30-RUBBER BASE	100283	2-FIXTURE,L65-WSA-DIV(MULTI-SERV)	100074
8-SHELF CLIPS	100027	1-SINK, EPOXY L30, BLK	100699
2-ELECTRICAL BOXES, 2X3X2.5	100033	2-ADJ SHELVES, 18X28.18	200405-1356
2-ELECTRICAL GFI OUTLET	100034	1-EPOXY TOP, 78X24, BLK, FIXT	207824-A
8-SCREWS, 6X1/2 PPH	100475	1-EPOXY TOP, 78X4, BLK, BCKSPLSH	207824-B
2-STAINLESS STEEL CORNERS	100057	1-EPOXY TOP, 30X24, BLK, FIXT	207824-C
8-SS SCREWS, 6X1/2 PTH	100064	1-EPOXY TOP, 30X4, BLK, BKSPLSH	207824-D
1-SINK, OUTLET/STAINER EPOXY	100055	1-SILICONE SEALANT, CLEAR	100711
1-SINK TRAP, PLASTIC ADJ	100056	1-SINK STOPPER, 1 1/2 BLK	100112

REV	DESCRIPTION	DATE	INITIAL
---	Original Created	3-27-07	JWD

Assembly Instructions for 2946K – 2956K Forward Vision 4 Student Workstation

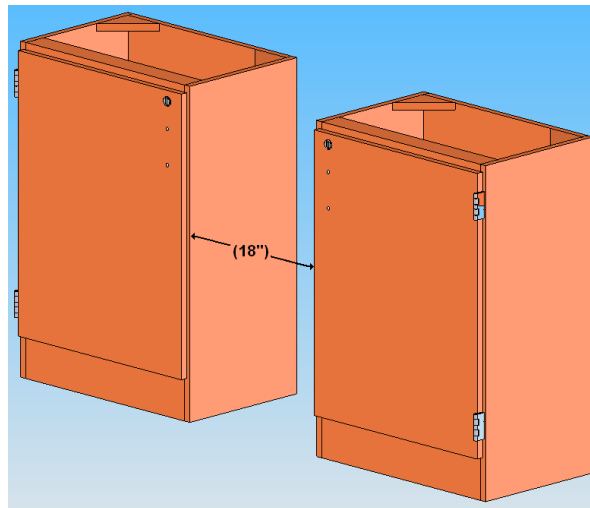
Items not included but needed for assembly:

1. Screwdriver with Phillips bit
2. 1/8" drill bit
3. 1/2" and 9/16" wrenches
4. Tape measure
5. Level
6. Contact Cement
7. Liquid Nails or Silicone adhesive

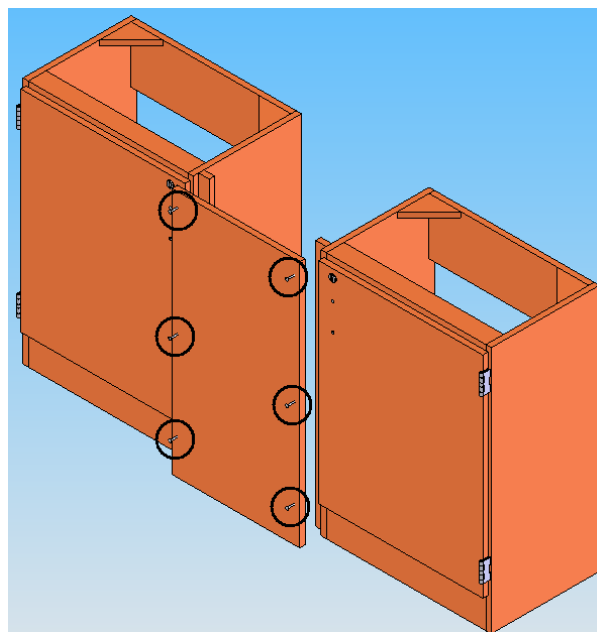
Inspect all components for shipping damage.

Instructions:

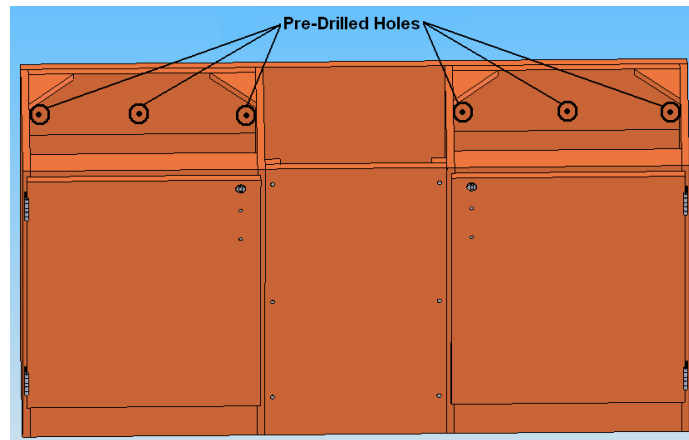
1. Position 2-24" base cabinets in desired location making sure door hinges are on the outside.



2. Place the 18" removable panel between the cabinets. Drill pilot holes thru the panel into the cleats. Fasten with the 6 - #10 x 1 1/2" decorative Phillips truss head screws.



- Place the 66" back panel on the backside of the cabinets. Fasten the back of the cabinets with the 12 #8 x 1 1/4" sq. drive washer head screws.



- Layout workstation frame with the square side of the apron on the floor. Use the #8 x 3/4" screws to connect the 21 7/8" apron pieces to the 49" aprons using the 90-degree corner brackets.

Figure 4B

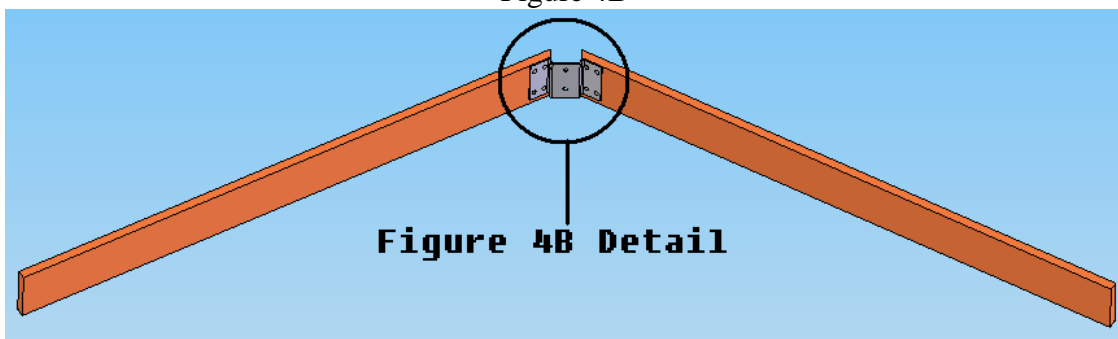
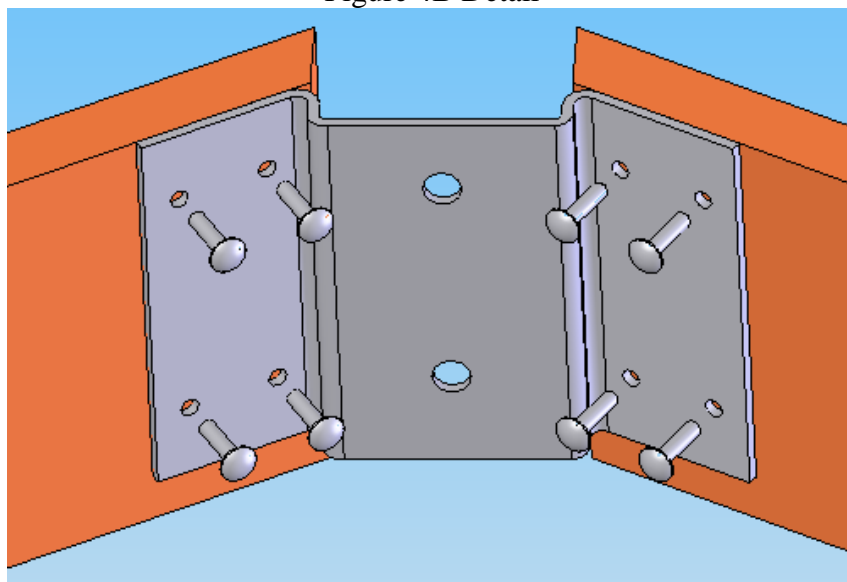


Figure 4B Detail



5. Position leg with the steel bracket at the end of the aprons and attach using the 8 - #8 x 3/4" truss head screws.

Figure 5A

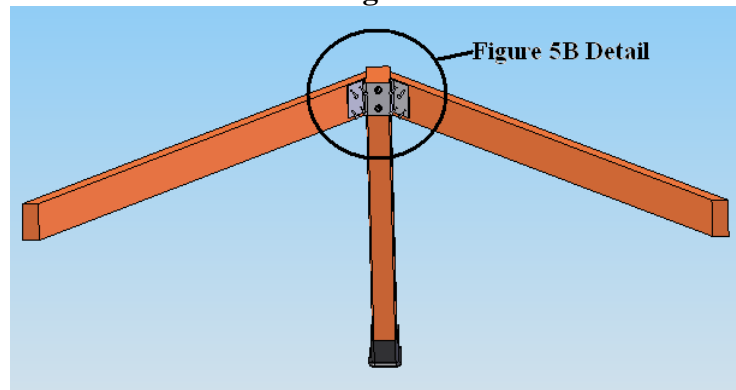
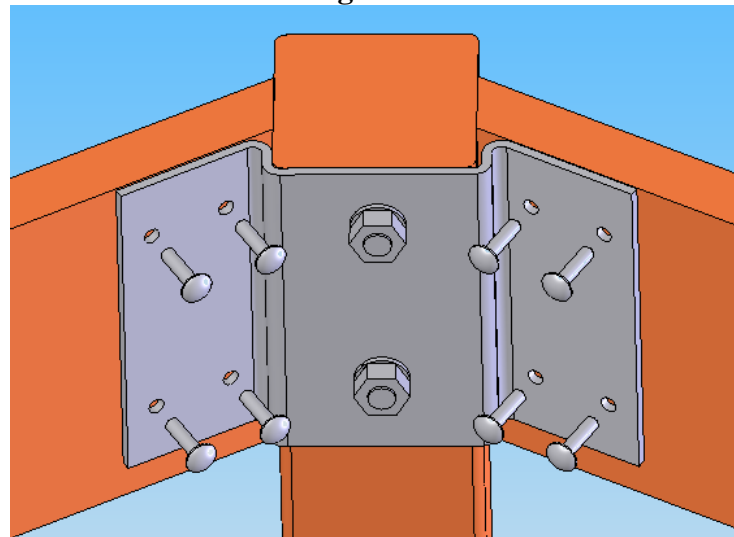
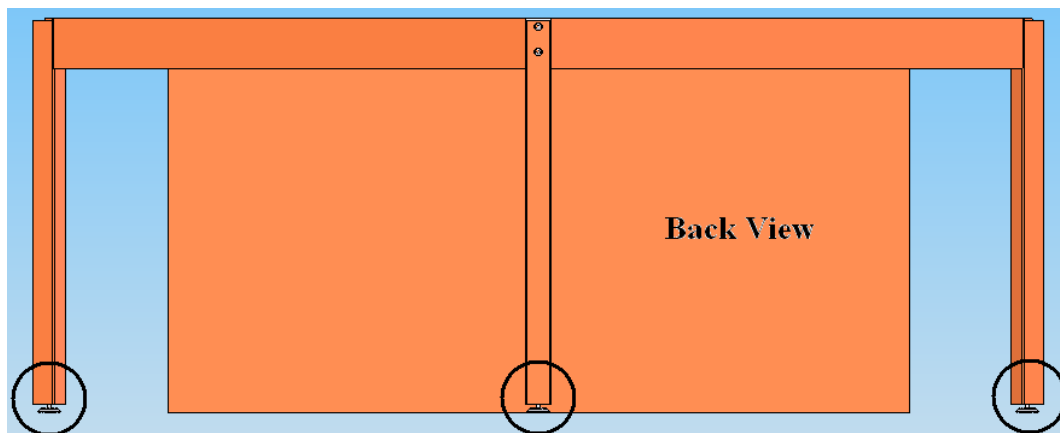


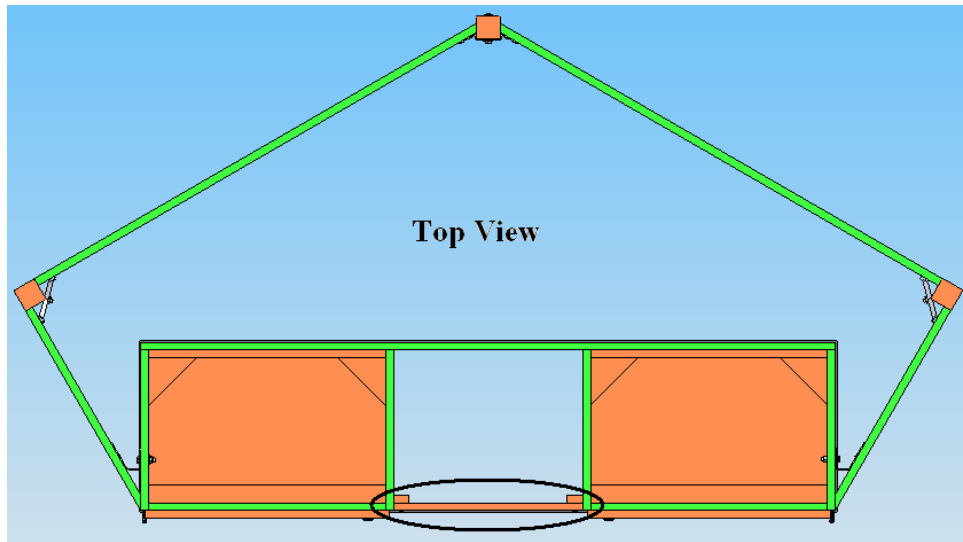
Figure 5B



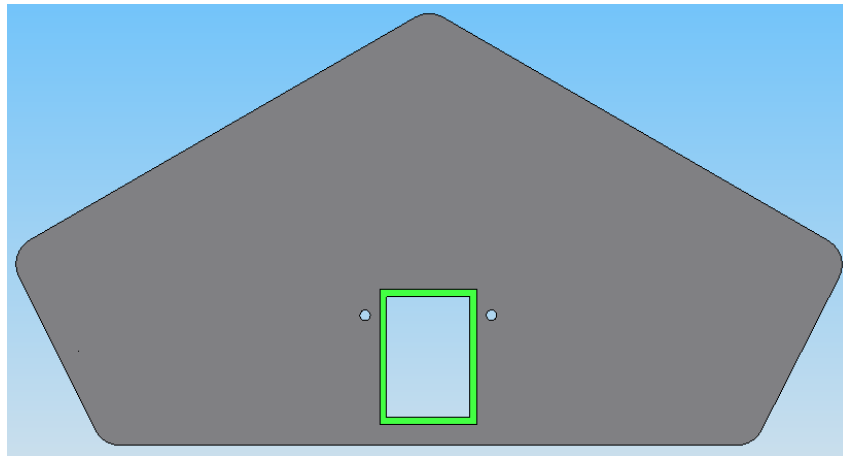
6. Stand apron assembly up and slide up to cabinet back.
7. With level, adjust leg leveler until entire frame is level with the cabinet.



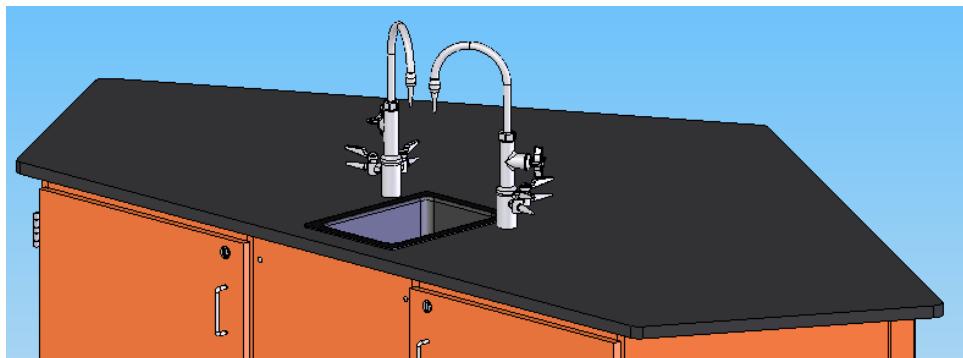
8. Apply a bead of silicone adhesive caulk around perimeter of frame and cabinet. Set the epoxy top on the frame and cabinet, centering top on the frame for proper overhang. **Do not apply adhesive to the filler panels, doing so will prevent utility connections later.** Let dry for 12 – 24 hours.



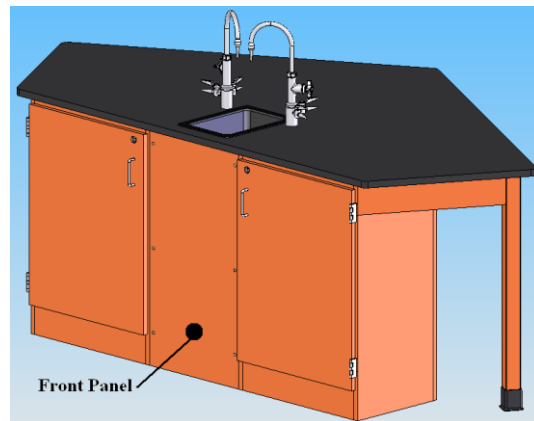
9. Clean the top with water only making sure sink area is clean and dry. Apply bead of silicone around the inside lip of sink opening and set sink in place. Let dry for 12 – 24 hours.



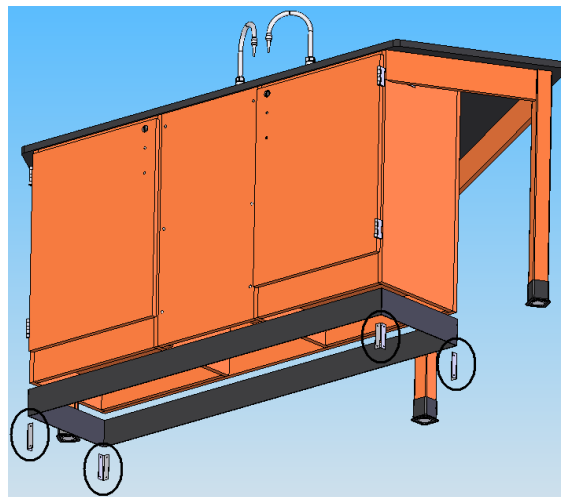
10. Mount fixtures into place.



11. Remove the front 18" panel to connect utilities. **All water, electrical and gas connections should be performed by a trained professional.**



12. Cut the rubber base molding to fit all sides of the workstation and attach using contact cement. After molding is in place, use the #6 x 1/2" SS screws to screw stainless steel corner brackets on each corner over the base molding.



13. Reverse pulls on the Cabinet doors as shown.

