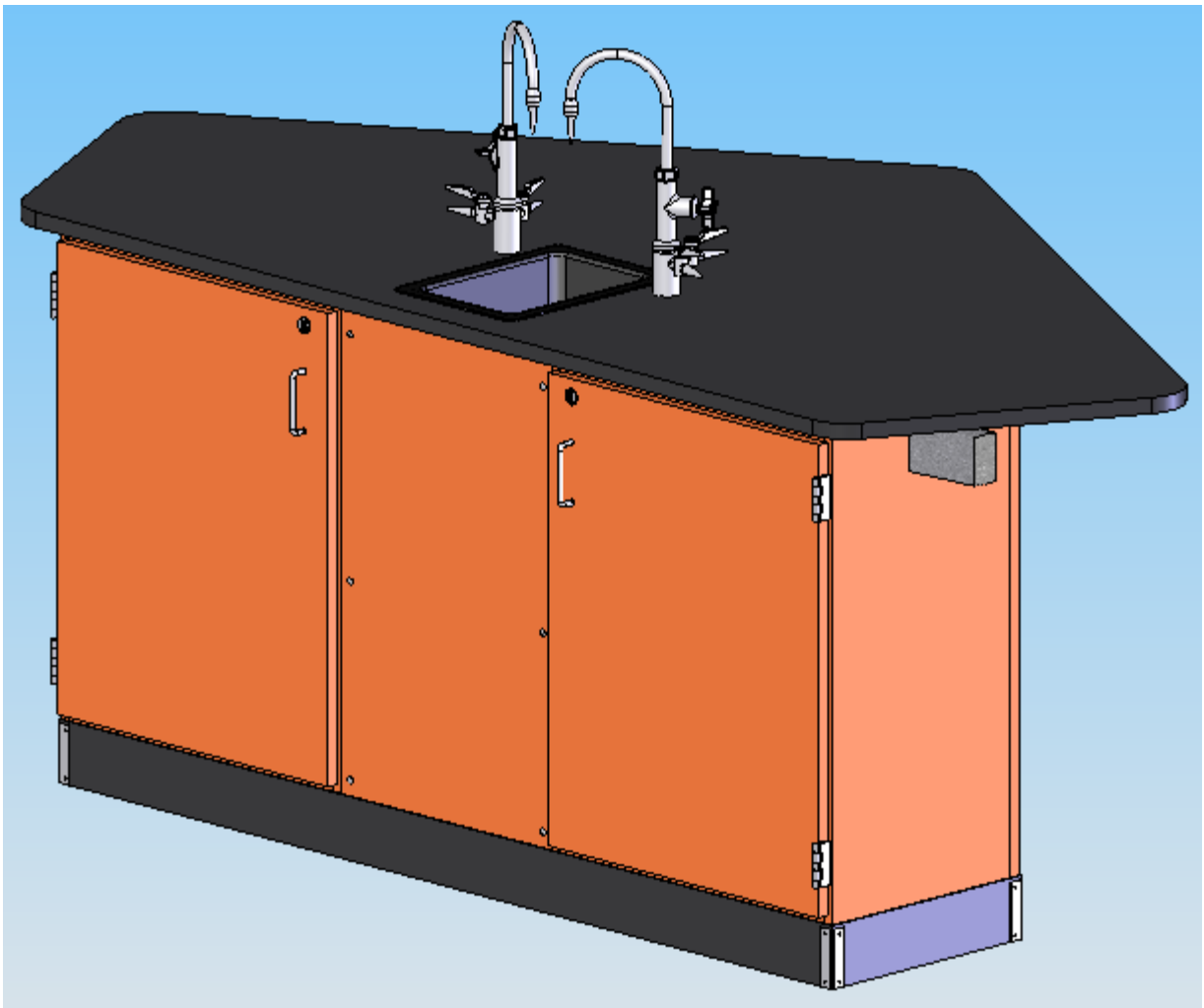


## 2944AC LABVISION



# TABLE OF CONTENTS

	PAGE
REVISIONS TABLE.....	3
ASSEMBLY COMPONENTS.....	3
APRON BRACKET.....	4
FILLER ASSEMBLY.....	4
BACK ASSEMBLY.....	5
LEG ASSEMBLY.....	5
APRON ASSEMBLY.....	5
ELECTRICAL BOX ASSEMBLY.....	7
TOP ASSEMBLY.....	9
SINK ASSEMBLY.....	9
FIXTURE ASSEMBLY.....	9
BASE MOULDING ASSEMBLY.....	10
PULL ASSEMBLY.....	10

# ASSEMBLY COMPONENTS

Items Included In Hardware Box	Part #		Part #
16-SHELF CLIPS	100027	12-SCREWS, #8X3/4 PHIL TRUS HD	100649
13.5 FT RUBBER BASE	100283	6-SCREWS, #8X1 1/4 WASH HEAD	100478
1-LEG HARDWARE KITS	520001	2 - TABLE CORNER BRACKET	100077
2-CARRIAGE BOLTS, 5/16X2-3/4	100381	1 - APRON TO APRON BRACKET	100376
6-SCREWS, #10X1-1/2 PHIL TRUSS	100495	2 - APRON TO CABINET BRACKET	100972
4-SS CORNERS	100057	2-NUT, 5/16X18	100044
16-SS #6x1/2 PTH SCREW	100064	2 FIXTURES,L65-WSA-DIV	100074
1-OUTLET/STAINER EPOXY	100055	1 EPOXY SINK,L3	100691
1-PLASTIC TRAP	100056	1-PHENOLIC TOP	213597
1-SINK STOPPER	100112	1 FILLER PANEL 35X18	BF3518KRCCG
1-SILICONE	100711	1-L 36, W/T-NUT	L36-W
1-LEG BOOTS	100076	1-APRON,4.5X36.81,RIGHT	214001
4-BOLTS,3/8-16X2" HEX HEAD	100377	1-APRON,4.5X36.81,LEFT	214000
6-WASHERS, 5/16 FLAT ZINC	100451	4-SHELF, ADJ 14 X 22.19	200397-2218
4-NUTS 3/8X16 HEX ZINC	100621	1-FILLER PANEL 35X66	212676

REV	DESCRIPTION	DATE	INITIAL
---	Original Created	3-267	JWD

## Assembly Instructions for 2944AC LABVISION

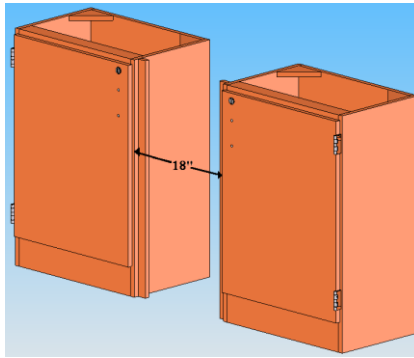
Items not included but needed for assembly:

1. Screwdriver with phillips bit
2. 1/8" drill bit
3. 1/2" and 9/16" wrenches
4. Tape measure
5. Level
6. Contact Cement
7. Liquid Nails or Silicone adhesive

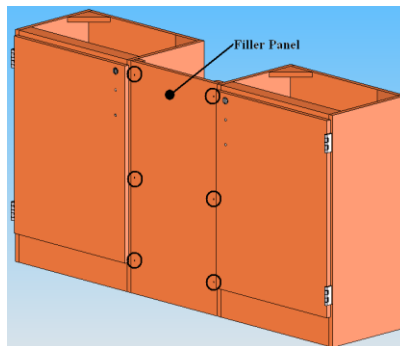
**Inspect all components for shipping damage.**

Instructions:

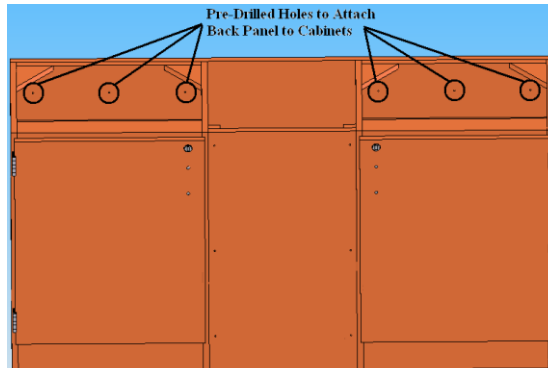
1. Position 2-24" base cabinets in desired location making sure door hinges are on the outside.



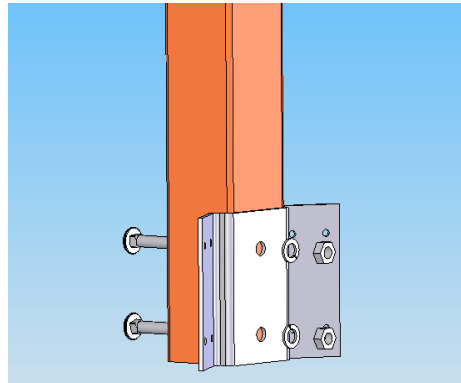
2. Place 18" plywood panel between cabinets. Drill pilot hole thru panel into cleat. Fasten with the 6 - #10 x 1 1/2" decorative Phillips truss head screws.



3. Place the 66" plywood panel on the backside of the cabinets. Fasten the back of the cabinets with the 12 #8 x 1 1/4" sq. drive washer head screws.

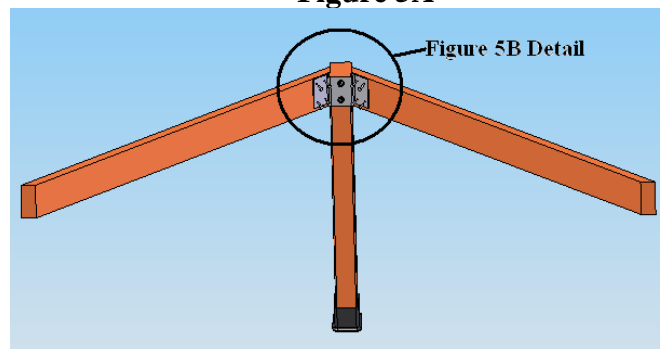


4. Attach the apron-to-apron bracket to the L-36 leg using the 5/16" x 2 3/4" bolts. Make sure the bracket is positioned on the leg, with the 3/4" spacing to the center hole, toward the top of the leg.

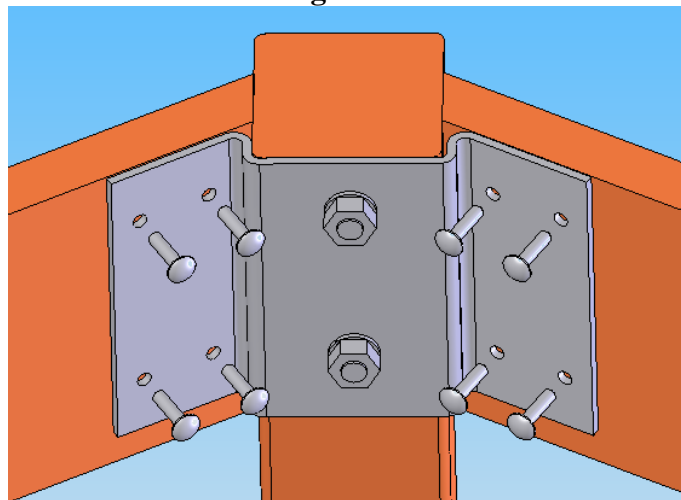


5. Position leg with the steel bracket at the end of the aprons and attach using the 8 - #8 x 3/4" truss head screws.

**Figure 5A**

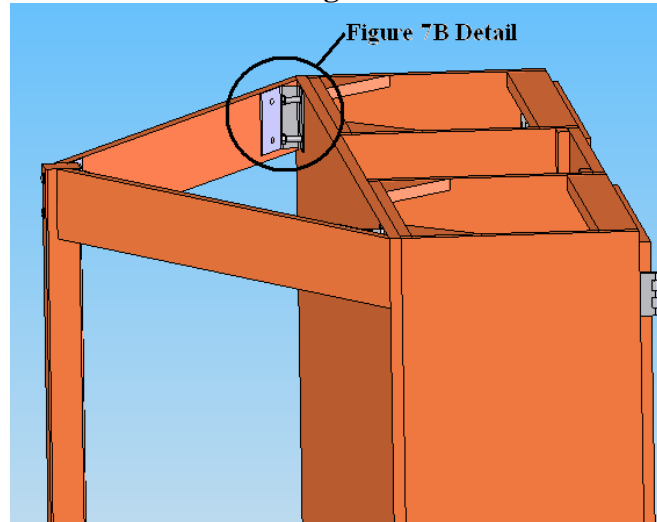


**Figure 5B**

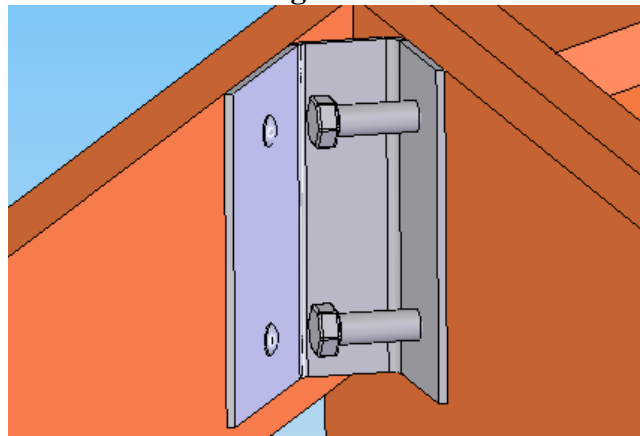


6. Stand apron assembly up and slide up to cabinet back.
7. While holding apron flush with cabinet top and 1/4" in from the sides, attach cabinet bracket to the back of cabinet with the 3/8" x 1 1/2" hex head bolts. Repeat on opposite side.

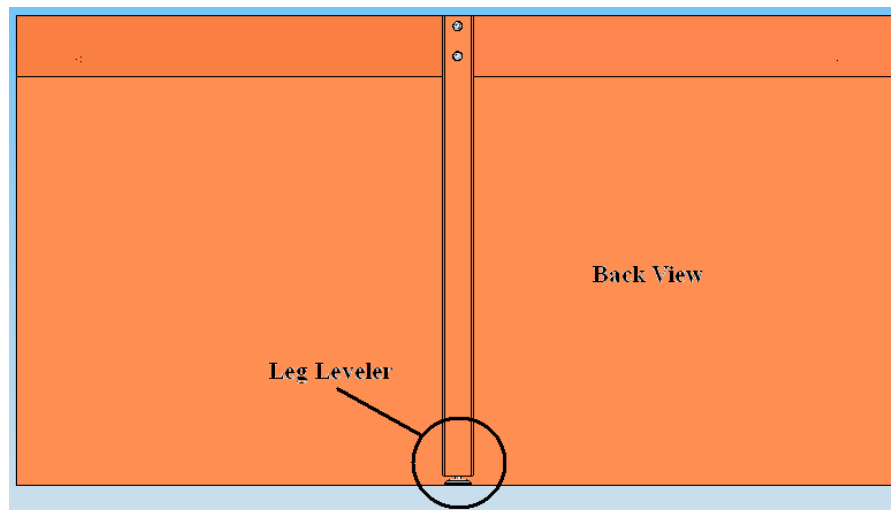
**Figure 7A**



**Figure 7B**

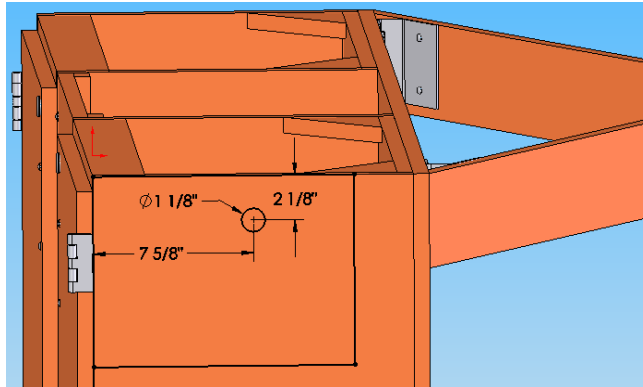


8. With level, adjust leg leveler until entire frame is level with the cabinet.

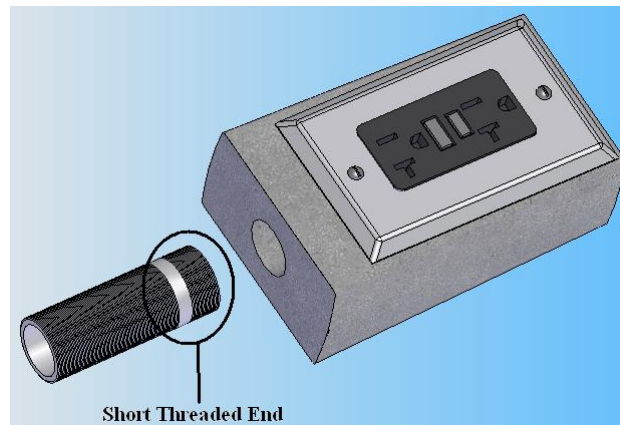


9. Place Electrical Hole Location Template (refer to drawing 2944AC sheet 2) onto side of cabinet(s).

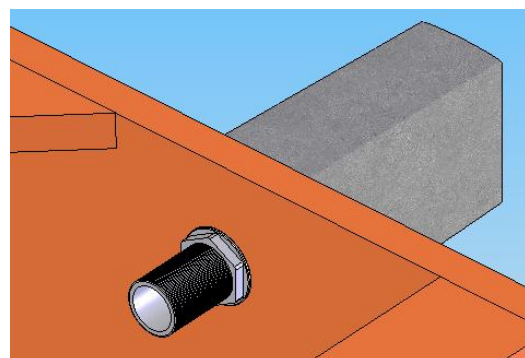
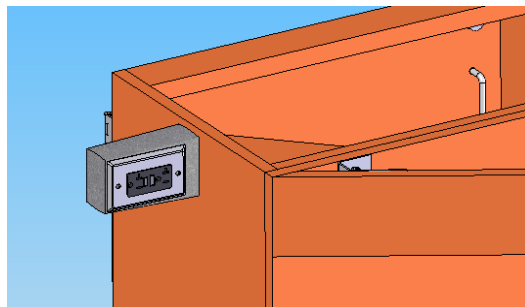
10. Mark hole location and drill hole using 1.125" bit.



11. Thread the shaft (short threaded end) into the electrical tower.

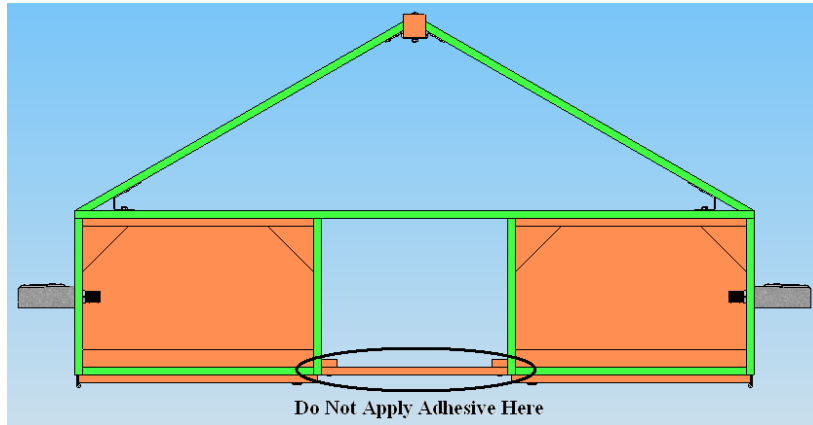


12. Feed shaft through hole, and thread the nut (inside of cabinet) until tower is secure.

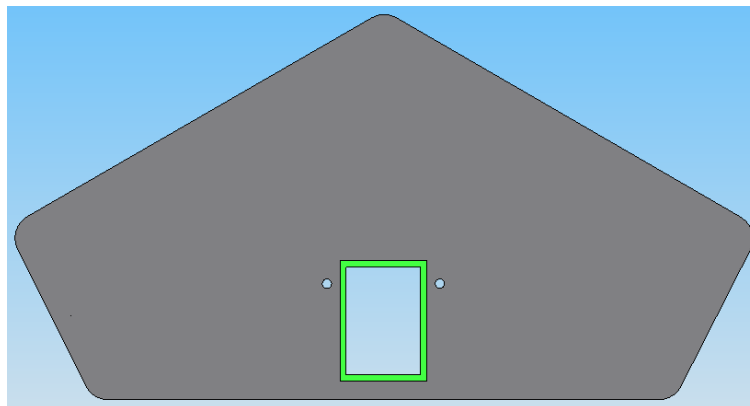


13. All water, electrical and gas connections should be performed by a trained professional.

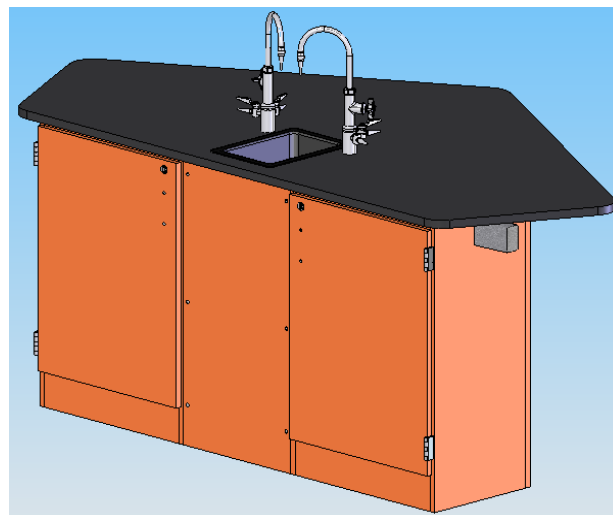
14. Apply a bead of silicone adhesive caulk around perimeter of frame and cabinet. Set the epoxy top on the frame and cabinet, centering top on the frame for proper overhang. **Do not apply adhesive to the filler panels, doing so will prevent utility connections later.** Let dry for 12 – 24 hours.



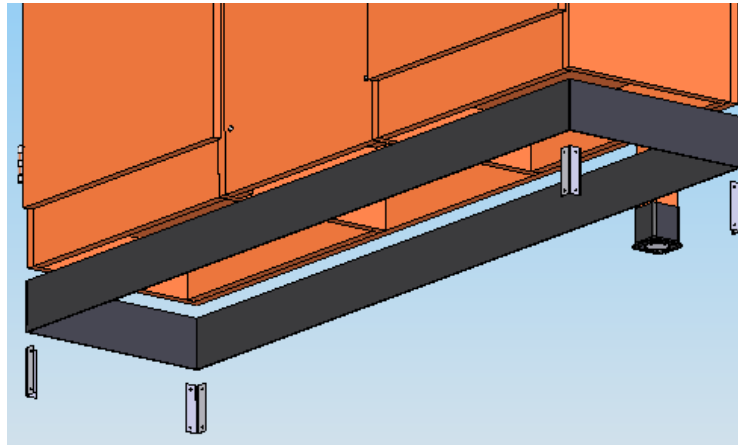
15. Clean the top with water only making sure sink area is clean and dry. Apply bead of silicone around the inside lip of sink opening and set sink in place. Let dry for 12 – 24 hours.



16. Mount fixtures into place.



17. Cut the rubber base molding to fit all sides of the workstation and attach using contact cement. After molding is in place, use the #6 x 1/2" SS screws to screw stainless steel corner brackets on each corner over the base molding.



18. Reverse Door pulls as shown below.

